

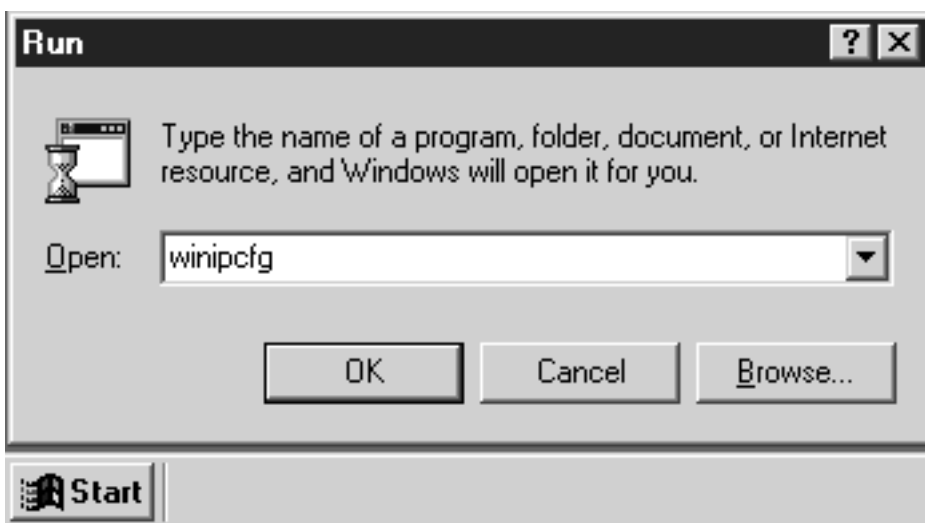


Windows 98 & ME Ethernet Setup

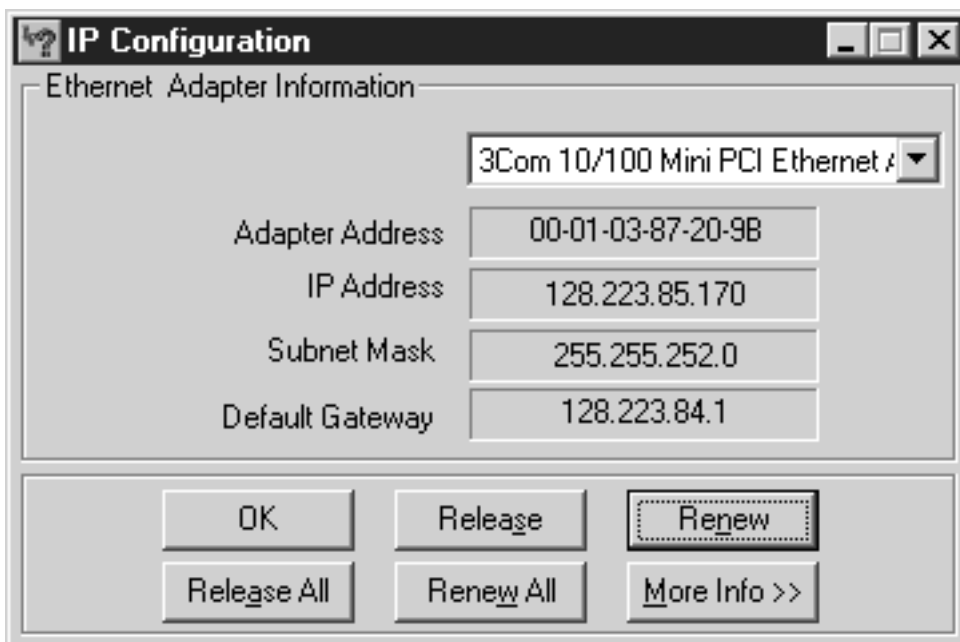
Windows 98 and ME are preconfigured for all for the standard networking protocols required to use the UO network. You should not be required to modify any settings in your Network control panel.

If you use Ethernet from various locations around campus and have problems connecting, try the following steps:

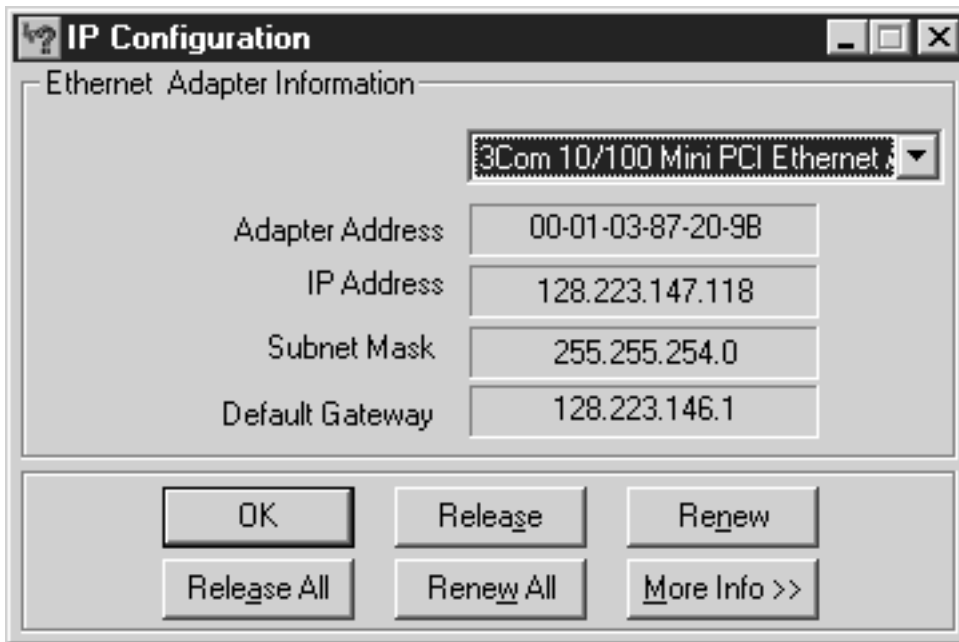
- 1) Click on the Start menu and select "Run." Type "winipcfg" and press "OK."



- 2) A window will open. Click the "Release" button.



3) Now click the “Renew” button. Close the windows by clicking “OK.”



4) You should now be able to use the network. If this did not fix the problem, you should consult with the ITC Staff or MicroServices in McKenzie Hall, room 151.