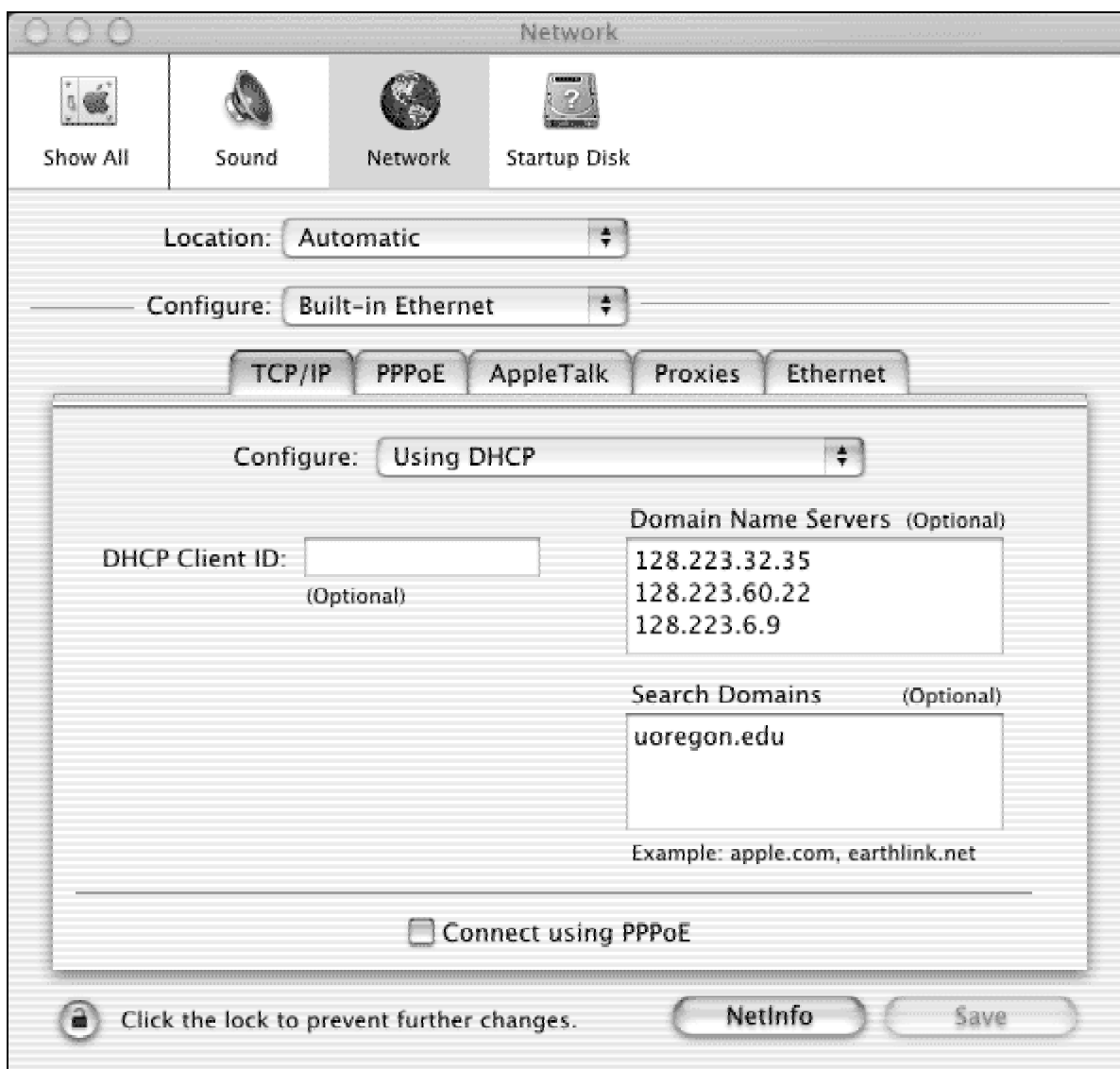




## Macintosh OS X Ethernet Setup

- 1) Attach an Ethernet Cable by plugging one end of the cable into the Ethernet card. Plug the other end of the cable into a jack on the wall.
- 2) In the dock at the bottom of the screen, click System Preferences. At the top of the window, click "Network".
- 3) Set the "Configure" option to "Built-in Ethernet".
- 4) On the "TCP/IP" tab, set the "Configure" option to "Using DHCP". Enter the three Domain Name Server addresses as shown below. Add "uoregon.edu" in the "Search Domains" section. Click on the "Save" button and close the window.



- 5) You may now run your network applications.